

Line-Gen 9600

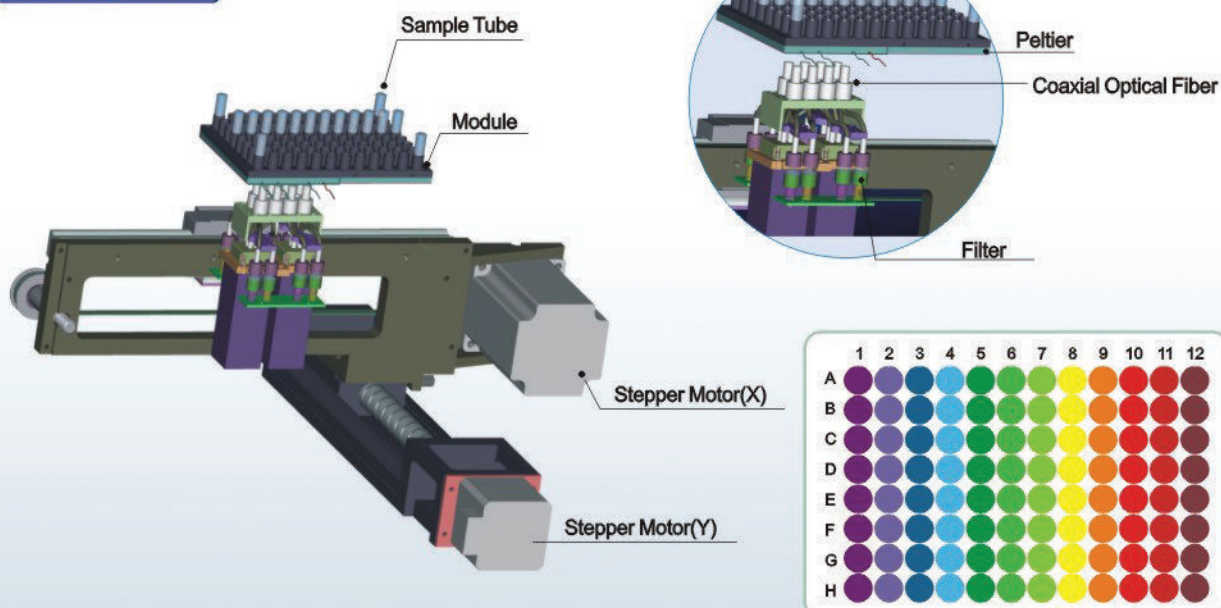


Line-Gen 9600 is the newest product of Bioer's Real-Time PCR detection system family. Based on Line-Gen family's tradition, Line-Gen 9600 Performs larger sample capacity, more detection channels and wider temperature range.

Unlike other Line-Genes in family, the unique patented block dissipation technology and bottom detection mode provide Line-Gen 9600 better heating/cooling rate, temperature accuracy, uniformity and stability. Line-Gen 9600 has up to 96 sample capacity and implements 96 wells dual-color scanning only within 5.5 seconds. With new design of at most eight channels, the instrument covers the whole fluorescence detection wavelength.

Adopting FerroTec newest Peltier, fiber optic technology and a new global wide range power supply, the highly improved instrument is available for a variety of scientific research and clinical applications.

Working principle



※ up to 36℃ of the temperature range

All for you! The best 16



Using excellent Ferrotec Peltier cooler inside.



Up to 96 samples, fit for most full skirted plate, 12×8-strips and 96×0.2ml tubes.



Constant pressure hot-lid, automatically adjust height, effectively prevent reagent evaporation.



Multi-socket transformer, fit for RS232C, USB or blue tooth, PC-connection easily.



Patented block dissipation technology brings on excellent performance in heating and cooling rate.



Long-life LED light source, paired excitation, dual high-sensitivity PMT synchronous detection.



Highly temperature control accuracy and stability as Bioer's tradition.



Optional hot-lid temperature range, switch available. Plus front switch makes it safer.



Up to 8 individual filters, cover all wavelength of common used dye.



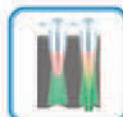
Maximum 36°C temperature gradient control function, with calculator.



Automatically temperature control mode (Tube/Block) switch based on sample volume.



Professional analysis software, installable for both Windows 2000/XP.



Bottom detection mode avoids interference between wells and insures result more reliable.



Wide block temperature range: 4-105°C, with SOAK low temperature conservation function.

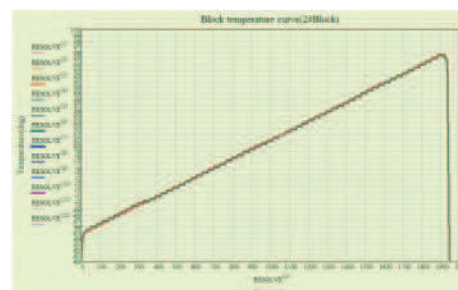
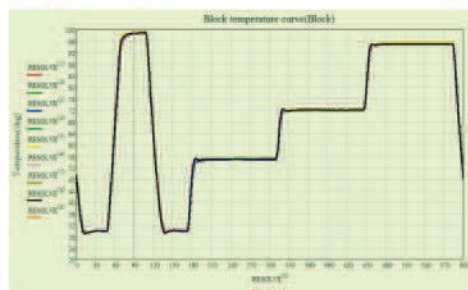


Both entire plate and designated line scan mode. Rapid for a 96 wells dual-color scanning.

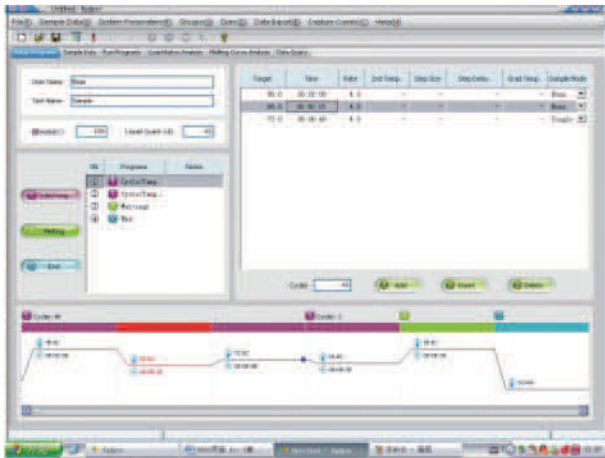


Global wide power supply range with PFC function.

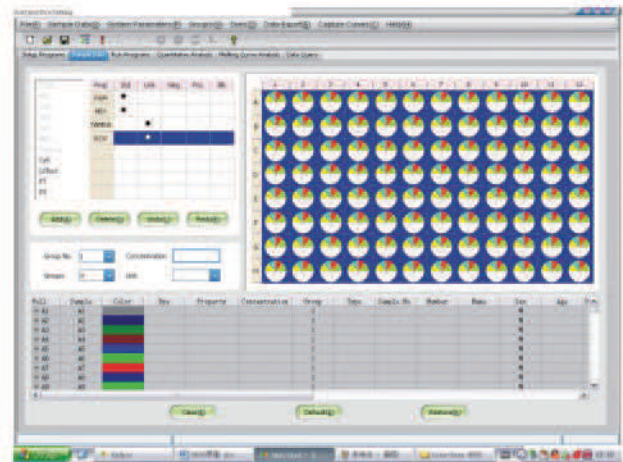
Highly Temperature Control Accuracy & Stability



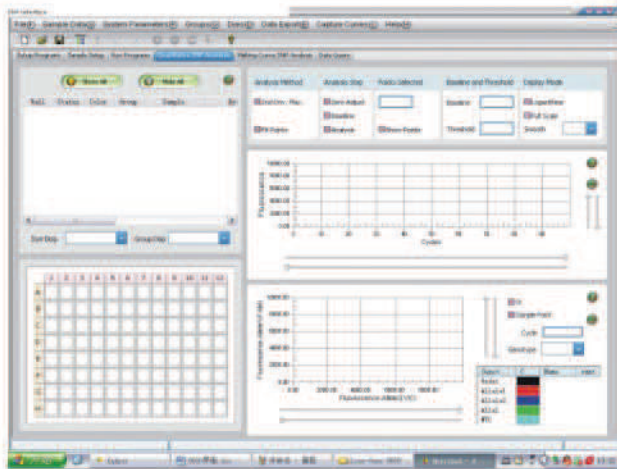
Interface Introduction:



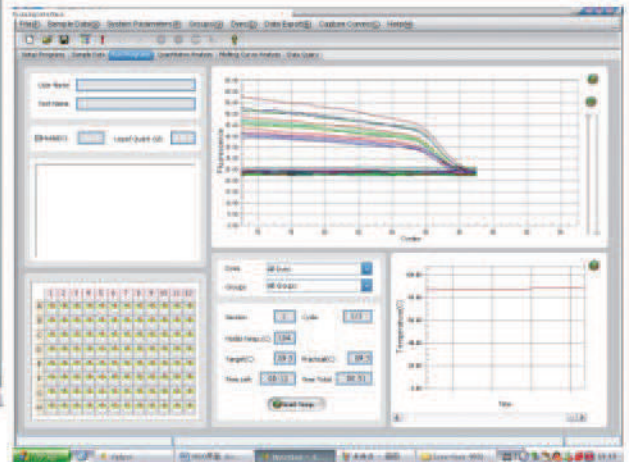
Software Programming



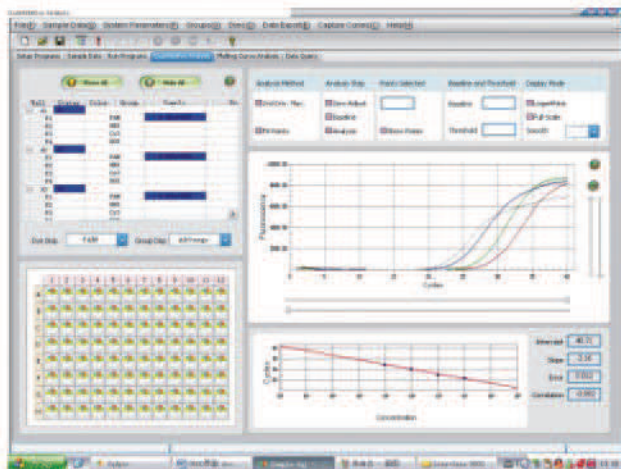
Well and Dye Setting



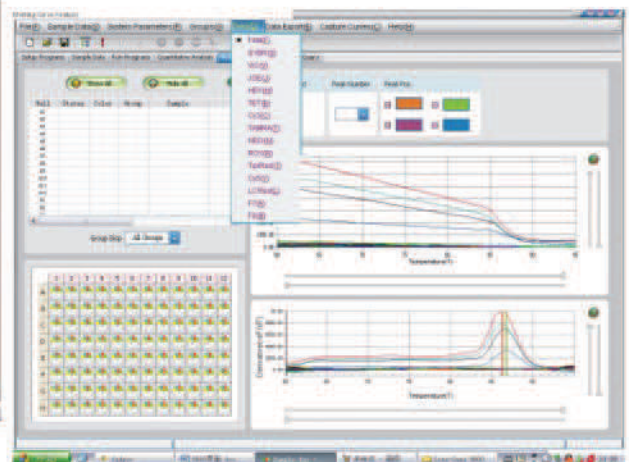
SNP Interface



Running Interface



Quantitative Analysis



Melting Curve Analysis

Specification:

Model	9640	9660	9680
Sample Capacity	96-Well Microplate (Full Skirted), 12×8-strip, 96×0.2ml (Bottom Transparent)		
Excitation Wavelength	300-800nm		
Emission Wavelength	500-800nm		
Detected Fluorescence	F1:FAM, SYBR Green I F2:VIC, HEX, TET, JOE F3:CY3, NED F4:ROX, TAMRA, TEXAS-RED	F1:FAM, SYBR Green I F2:VIC, HEX, TET, JOE F3:CY3, NED F4:ROX, TAMRA, TEXAS-RED F5:CY5 F6:LightCycler Red	F1:FAM, SYBR Green I F2:VIC, HEX, TET, JOE F3:CY3, NED F4:ROX, TAMRA, TEXAS-RED F5:CY5 F6:LightCycler Red F7,F8 for Customized
Block Temp. Range	4 ~ 105 °C (Minimum Increment : 0.1 °C) SOAK Low Temp. Conservation Function		
Heating/Cooling Rate	4.0 °C /s		
Temp.Control Accuracy	≤±0.1 °C		
Temp. Fluctuation	≤±0.1 °C		
Temp. Uniformity	≤±0.3 °C		
Temp. Control Mode	BLOCK/Tube Simulation Mode (Automatic Control Based On Sample Volume)		
Sample Volume Range	5~100μL		
Gradient Temp. Range	1~36 °C		
Hot-lid Temp. Range	30 ~ 110 °C (Adjustable , Default 105°C, Automatic Hot-lid)		
Fluorescence Detection Repeatability	5 %		
Scan Mode	Entire Plate or Designated Line		
Program	Max 20 Segments for Each Program, Max 99 Cycles		
Operation Mode	Continuous		
Scan Period	5.5s (F1/F2 96 Plate Scan)		
Feature Function	Absolute Quantification, Relative Quantification, SNP Analysis, Melting Curve, Gradient etc, Automatic Gain, Customized		
Operation System	Microsoft : Windows2000/XP Software : Excel2000/2002/2003 Access2000/2002/2003		
PC Configuration	Memory:512M Hard Disk:10GB CPU: Pentium® 4 Virtual Memory: ≥1000MB		
Power Supply	100-240V ~ 50/60Hz 600W		
Dimension (L×W×H)	430mm×395mm×352 mm		
Net Weight	28kg		
Socket	RS232C Adapter, USB Adapter (Optional) , Blue Tooth Adapter (Optional)		